

SRD Change



inspire... provoke... **change**

Graduate
Sustainable
Design
Exhibition



Society for Responsible Design

Welcome, open your mind, see some alternate perspectives.

The SRD Change 09 exhibition is the culmination of a collaborative process uniting the wisdom and knowledge of tertiary educators, practical working expertise of design professionals and new creative enthusiasm of final year graduate project research. The result promotes fresh ideas, solutions and ways, through which society can be made more sustainably aware and responsible.

A project of the Society for Responsible Design, SRD Change in 2009 presents its sixth annual exhibition, showcasing projects that inspire and challenge convention. Selected from design disciplines across Sydney's leading tertiary institutions, these Graduate projects address issues of sustainability, social equity and community. The thinking embraced by these projects, highlights how responsible design can significantly contribute to more sustainable practices across all design streams such as architecture, engineering and industrial design, fashion, visual communication, interiors, landscaping and more. This insightful exhibition confirms the importance of higher education as an integral element to enabling change. SRD Change is designed to promote greener graduate projects completed in the previous year as well as nurturing ideas for candidates in upcoming years of study.

- | | |
|-------------------------------|------------------------------------|
| 1 SRD Change 09 | 22 Totem Challenge |
| 2 Welcome | Johanna Worton |
| 3 SolarStand Tom Fereday | 23 Fashion Footprint |
| 4 Solaqua Jason Lam | Holly Kaye-Smith |
| 6 Greendale Joseph O'Meara | 24 Biophillia Nina Brettnall |
| 8 Hybrid Ashley Jae | 25 Website Team Project |
| 9 Link Antony Grimes | 26 Winter in Sicily Stephanie Lade |
| 10 Hand Basin Xanthe Warren | 27 Vanguard Millie Lakos |
| 12 Balbalin Nicholas Newton | 27 Fluxus Emma Smogurzewski |
| 13 Blade & the Bow Pip Waters | 28 Support Team Project |
| 14 Wasteland Scott Champion | 29 Gaawaa Miyay Lucy Simpson |
| 16 Rehydr8 Justine Smith | 30 Concrete Anchor Team Project |
| 18 E-Trix Omar Alrawi | 30 Investa Property Group |
| 19 D-Tek Liam O'Brien | 31 Society for Responsible Design |
| 20 Urban Rural Team Project | 32 Sponsors / Credits |

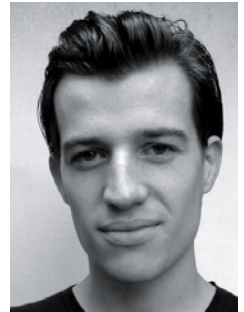
SolarStand

Tom Fereday

Universal Solar Panel Stand

Innovatively transforming and improving flexible solar panel technology for the outdoor adventure market.

The patent pending SolarStand alleviates a number of associated problems with rollable solar panels transforming the technology into a highly commercial product. Integrated into the packaging of a rollable solar panel, the SolarStand is designed to enhance and improve the panels in three main areas. Providing increased power output by up to 35% through the innovative solar tracking stand design. Providing increased versatility allowing for attachment to almost any surface along with tent and tripod fixings. Providing electronic equipment safety through a dynamic waterproof charging storage unit.



“
The SolarStand acts as a direct trade-off to primary batteries and can charge anything from laptops to MP3 players”

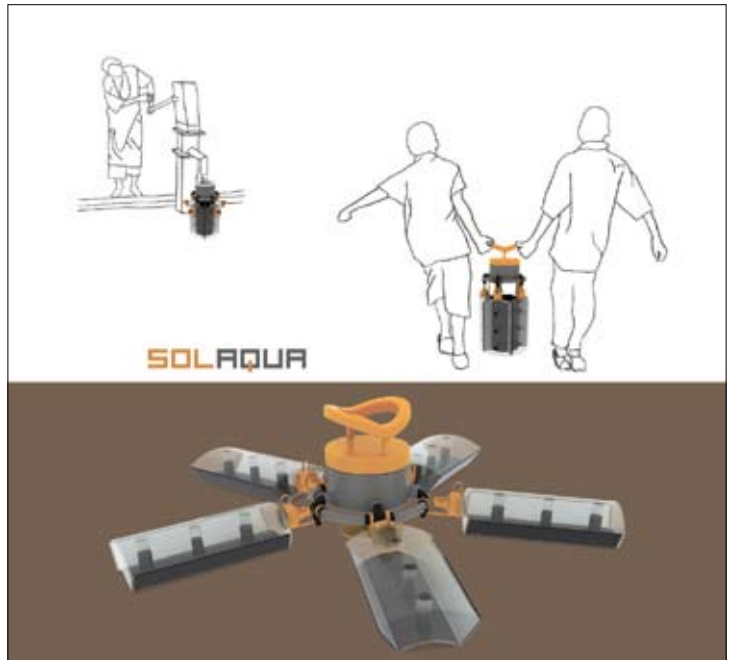
B.Des (Ind Design) UTS
tom@tomfereday.com
www.tomfereday.com

Solaqua

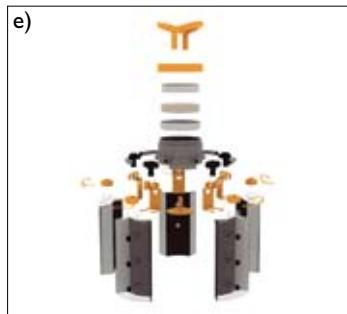
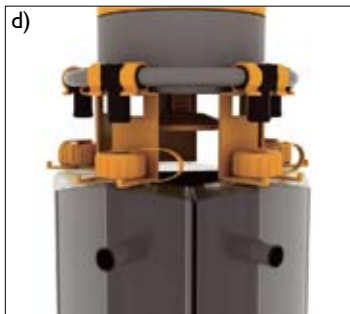
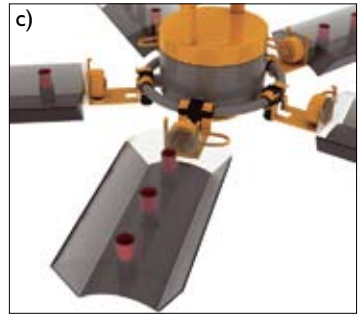
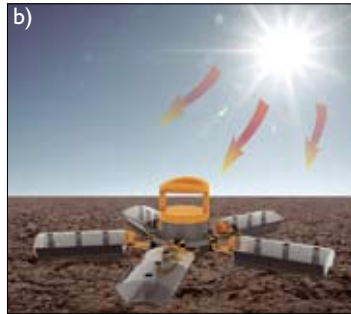
Water Disinfection Unit

Solaqua is a water disinfection unit to be used in rural sub-Saharan Africa.

It utilises ultra-violet and infra-red rays from the sun to eliminate pathogens within contaminated water. Raw water is first passed through a sari cloth filter to improve efficiency of solar water disinfection (SODIS). A five tap funnel fills five specially designed bottles to obtain ten litres of water. By spreading and laying the bottles on the ground, the transparent bottle surface allows maximum exposure to UV rays. The black, back surface of each bottle absorbs heat, while reflective inner surfaces reflect UV rays within the water itself.



B.Des Ind Des UNSW
jasonlam5@gmail.com
0401 360 386



- a) Fully assembled Solaqua model
- b) Invisible ultra-violet (UV) and infrared (heat) rays disinfect the water. This is known as Solar Water Disinfection (SODIS).
- c) Thermographic ink labels turn red to indicate the temperature of water once fifty degrees Celsius is achieved
- d) Specially designed brackets act as hinges to rotate water bottles when laying flat
- e) All parts can be disassembled for either cleaning or replacing
- f) Built-in filter reduces turbidity of water to allow optimum disinfection
- g) Simple instructional graphics located on side of bottle

“
Socially innovative design with
environmental considerations.
”

Greendale Vertical Farming

'Greendale' is a 140 meter mixed-use high-rise which recreates the ground level environment in the sky.

It combines one hectares worth of growing space in a vertical farm with offices, apartments, commercial retail and education facilities at the new agricultural precinct in Black Wattle Bay, Sydney.

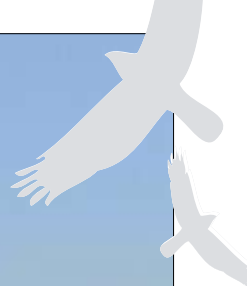
The structure recycles organic waste from the farm, offices and apartments, collects and re-uses water and generates it's own green energy via a methane gas generator, solar array and wind turbines.

With the current food price rises, oil and water shortages, growing population and increasing urbanization 'Greendale' addresses intensive food production sustainably without contributing to urban sprawl.



Joseph O'Meara
B.Des (Arch) M.Arch (Hons) USYD
joseph_omeara@optusnet.com.au
0421 049 949





“ Urban agriculture is an essential part of ecological cities ”



Ashley Jae

Hybrid An autumn/winter, women's wear collection

Inspired by the inventive Italian futurists whose fresh approach was at the forefront of 20th Century design.

The Hybrid collection was developed by focusing on futurism, dynamism, multi functionality and sustainability. Inspired by futuristic cars and architecture, I have created interchangeable designs, incorporating innovative use of existing technology. This dynamic is supported through a mix of high technology industrial fabrics, shadow prints, clean cuts and form using a sharp black and white palette.

- More versatile options •Wearable over an extended season
- Not just reversible but INVERTIBLE
- Fashion embracing change



“

distinctive urban utility, practicality and wide options that refine and maximize the wardrobe beyond its wearable potential ”

B. Des Fashion & Textiles UTS
ashley.jk.jae@gmail.com
0433 669 447

Link Urban Scooter System

Antony Grimes

The Link scooter system is designed as a modular transport solution that can be retrofitted to existing Streetscape Smart Poles.

Link operates by housing shared-scooters in a series of hubs. The hubs act both as charging station and as the hire/ return stations for the scooters. This system gives the user independent movement at any time. The scooters and hubs are constructed from a series of robust aluminium castings and pressing. These parts house polycarbonate and ABS mouldings which form the physical interface such as the scooter release and power indicator. Each scooter is fitted with NiMH rechargeable batteries and 24V electric motor which assists the user in getting between hubs. The system works as a public hire/ share network similar to those in Europe.



“
With an increasing population and limited resources there’s strong need to look towards green, on-demand, independent transport solutions
 ”

B. IndDes UNSW
 Anton@infiniteinventions.com
 0439 992 686

Slipping Between the Cracks

An environmentally conscious hand basin design

THE CONTEXT

Australia is more aware than ever that ours is the driest inhabited continent on earth and with this comes a series of very real problems. One in particular is the reduced availability of fresh water. But Australia has always been a tricky land and we have learnt to be inventive. Current solutions include water tanks, water saving nozzles, desalination plants and water recycling.

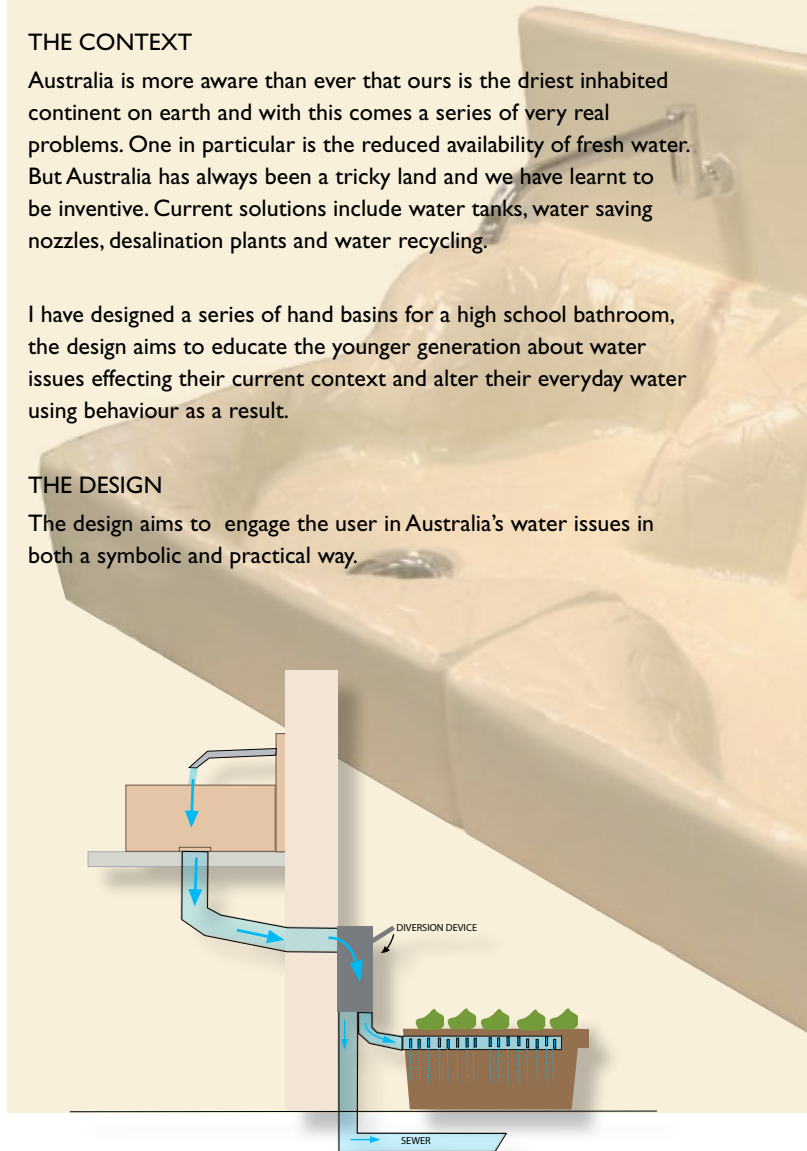
I have designed a series of hand basins for a high school bathroom, the design aims to educate the younger generation about water issues effecting their current context and alter their everyday water using behaviour as a result.

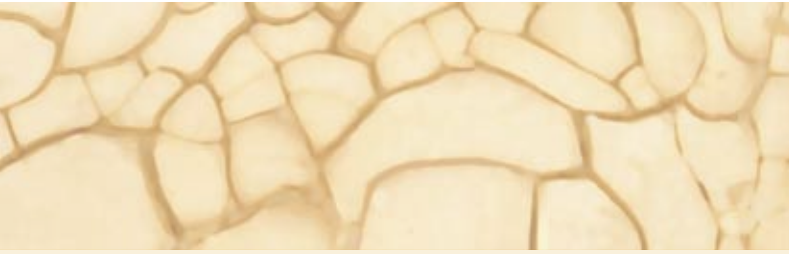
THE DESIGN

The design aims to engage the user in Australia's water issues in both a symbolic and practical way.



B.Des BArt Ed UNSW
xewarren@optusnet.com.au
0421 792 700





The hand basin design represents the cracked soil of a dry creek bed so the user makes the correlation between their water use and current water issues, hopefully responding by moderating their water use.

The practical element is a greywater reuse system. This is where the used water from the hand basin is diverted through a greywater filtration system to a garden box. This diversion is turned off and on with the plant and seasonal needs.

The design provides students with a tangible example of water reuse and environmentally conscious design. The basins are accompanied by a booklet detailing this process. Hence the basins and design process can be used as an educational tool in the classroom.

SPECIAL FEATURES

An accompanying booklet, timed flow taps, the use of biodegradable soap and modular mass producible design.

“
*a hand basin designed to educate
the younger generation about water
issues and alter their behaviour*”

Nicholas Paul Newton

Balbalin

Contemporary Barbecue

“Balbalin” is an Aboriginal word meaning ‘camp-fire’/‘ground-oven’; Balbalin is an outdoor cooking device that facilitates conventional barbecuing & the ancient Indigenous practice of ground-oven cooking. Utilising the process of ‘Gasification’ (up to 3 times more efficient than standard solid fuel barbecues) the Balbalin produces a cleaner, longer burn with less smoke and less noxious fumes. Constructed of natural materials such as rattan, and a locally sourced Sydney-basin Hardwood, and utilising sustainable finishing processes, the Balbalin brings together the functional elements of barbecuing, with the social interaction of cooking and eating, to promote social and environmental sustainability.



B. Ind Des. UWS
nick@pinkgorilla.com.au
0401 673 014

“ *The Balbalin promotes both Social & Environmental Sustainability through It’s design & use...* ”

The Blade and the Bow

Interactive sustainable clothing

‘Clothing that transforms into differing garments creating dual purposes, encouraging a sustainable approach to dressing.’

‘The Blade and the Bow’ delves into interactive methods of dressing, reaching out to our sense of invention. The wearer is given the opportunity to participate in tailoring the garment to their needs, expressing a personalised individual look, with attitude.

As you transform these pieces, you discover the relationship between the positive and negative space around your body. The rich colour palette of forest greens and mulberry tones, evoke the notion of the unknown or maybe now subliminal past, while shock accents surprise and provokes curiosity.



“
Clothing that transforms into differing garments encouraging a sustainable approach to dressing.

”

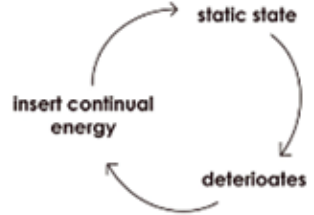
B. Des Fashion & Textiles UTS
 pip.waters@gmail.com
 0421 882 066

Endangered Wasteland

Southlands: exploration of a fragile condition

Wastelands possess a richness that is immediately felt but not often seen. Contemporary projects tend to obliterate, or simply not engage with the strong forces that define and create the wasteland.

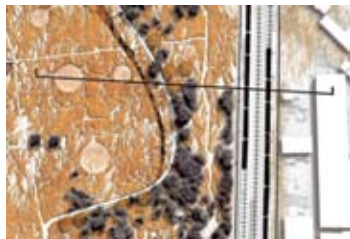
Through the exploration of entropy and in contrast to traditional landscape design the process of deterioration is encouraged as a potential process of creation. Periodic disturbance techniques invigorate the natural processes and transform the current weed ecology into a biodiverse mosaic providing a rich urban habitat while enhancing the wasteland quality.



Traditional attempt to stopping the process of deterioration



Embracing the deterioration process as potential for creation



detail plan showing section



B. L.Arch (Hons) UNSW
scott.champion@hotmail.com
0423 116 125



section through crop circles - raised footbridge - freight goods line



view from raised industrial walkway looking down upon the wasteland

This project has allowed me to discover a new realm of ecology, one that is outside of the 'pristine-nature' approach, instead dealing with the processes associated with entropy. It has simultaneously provided opportunities to educate people of the adverse environmental effects of industry.



montage of 'northern walls' boundary treatment



path typologies



“ Discover a new realm of ecology... one that is outside of the 'pristine nature' approach. ”

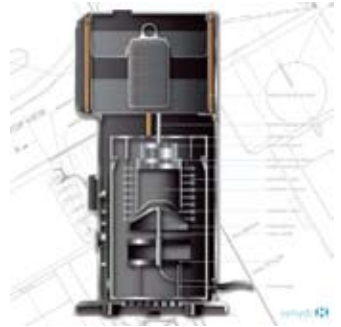
Justine Smith

Rehydr8 Thermoacoustic Water Filter & Chiller

The Rehydr8 was designed to discourage consumption of water from disposable bottles and promote that of filtered tap water.

The chiller uses innovative thermoacoustic refrigeration technology where sound waves create pressure & environmentally friendly gases (Argon or Helium) refrigerate the water.

The majority of disposable plastic water bottles have a single-use life-span and end up in land-fill, where they are estimated to take thousands of years to decompose. The rehydr8 has been designed to endure a much longer product life-span in comparison to disposable water bottles.



B. IndDes UNSW
justinesmith23@hotmail.com
0433 780 113



“ Rehydr8 is a response to the environmental problem of over 100 billion disposable water bottles being consumed annually. ”

Omar Alrawi

E-Trix Sustainable Transportation

The E-Trix is a product for sustainable development and a response to the need for sustainable transportation.



Since 1885, the basic shape and configuration of a bicycle has not significantly changed in line with advancing technologies. Few have taken the challenge to elevate the vehicle to a more captivating form. E-Trix is designed to enhance the cycling experience through innovative and unique form and function. Combining aesthetic appeal and a newly designed belt driven, gearing mechanism engineered to create a continuous smooth gear changing system, the E-Trix hybrid is not only a bicycle but a joyous commuting experience.

Engineered with minimal steel structure and fabricated from recyclable rotationally moulded polyethylene reinforced internally with durable, light weight polyethylene foam. The entire body is moulded in a single unit run minimising the cost of tooling and production time. E-Trix usage is facilitated via a systematic rental arrangement in our Sydney City and, together with support from local Cafe culture, will help to reach a healthier, cleaner and sustainable future. This project provides promising answers to Sydney City Council to help maximise business benefits that promote sustainable living and development, and increase accessibility of sustainable methods of commuting.



B. Ind Des. (Hons) UWS
omar@pinkgorilla.com.au
0431 100 443



D-Tek

Water Management System

D-Tek assists people to draw, transport, safely store and purify up to 20 litres of water from wells, and moving rivers.

D-Tek (water) is a streamlined water management system designed to improve health conditions surrounding water management in rural Cambodia. D-Tek is able to draw, transport, safely store and purify up to 20 litres of water from wells, ponds and moving rivers.

D-Tek targets the needs of people in Cambodia and SE Asia accessing difficult, dangerous river, pond and ground water supplies, especially in the dry season when water levels drop by up to 40 feet.

During the dry season people are confronted with steep un-navigable river banks and forced to trek long distances with water on their heads, resulting in smaller loads and causing physical damage to women and children, the primary water collectors.

With no affordable and portable pumps available, people are forced to enter contaminated sources whilst collecting water and washing, presenting a danger to the person and water source.

The suction pumps high pressure offers further benefits including showering, clothes washing and riverside irrigation during the dry season.



“
90 % of designers produce for 10%
of the worlds population.
Work that one out!”

B.Ind Des & Int Studies UTS
info@nightlightstudio.com.au
0406 120 684
www.nightlightstudio.com.au

Monica Gayed
Taj Jackson
Mathew Mariani
Ross Serrano

Rediscovering Being: Rethinking Urban Rural Living

The collaborative project is about rediscovering our humanness and promotes a new way of building, thinking and living in cities.

The project explores the symbiotic relationship between humans and the earth in an eco-urbanist framework. The project is driven by the notion of 'Green Infrastructure', and proposes a new hybrid agri-urban landscape - maximising the positive attributes of rural and urban dwelling. The earth is sculpted utilising the topography of the site and the natural elements of the landscape generate the permaculture pods, greenbelts, agro-fields and a wetland filtration system.



UNSW
info@studiohaptic.com.au
0404 923 737



“ a new hybrid agri-urban landscape - maximising the positive attributes of rural and urban dwelling. ”

The Totem Challenge

A fun, **interactive** installation that will guide today's youth in their **pledge** to tackle global warming.

Why isn't pollution taboo? This is the question that lies beneath each of the humorous situations in The Totem Challenge experience. In some traditional societies, the taboo of killing one's totem animal, had the fortunate side effect of protecting species from extinction. What if we each adopted 'a totem' to help us reduce our greenhouse emissions?

Four affable totem characters represent four industrial sectors in which the individual can reduce their emissions in small but effective ways. A visit to the installation will help you choose the best one for you.



B.Des (Vis Comm)
B.Arts (Int Stud) UTS
joworton@gmail.com
Tel: +39 331 583 3960



The idea is that visitors will be asked to adopt a totem, pledging to reduce their impact in that one sector if nothing else.

The installation is effectively an interactive survey that presents the visitor with ways to reduce their carbon footprint and allows them to choose whether or not they wish to follow each suggestion.



“ *I can remember when the air was clean and sex was dirty.* ”

—George Burns, US actor and comedian

Fashion Footprint video documentary

Holly Kaye-Smith

Fashion Footprint explores clothing production, fast-fashion, over-consumption, laundering and textile disposal.

It showcases innovations in sustainable design within fashion practices and lifestyle, offering practical ways to lessen ones own fashion footprint.



B. Visual Design (Hons) UWS
 yourbuddyholly@hotmail.com
 0415 754 489



Every visitor thus interactively records his / her personal pledge as they move throughout the space. The panels that form the installation combine print, animation and interactive screens and sculptural elements. The experience is memorable and allows individual expression. It provides information and raises consciousness around greenhouse issues.

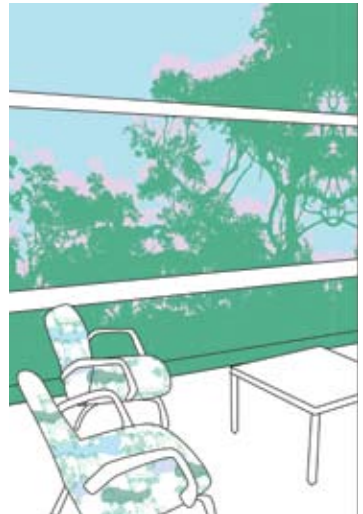
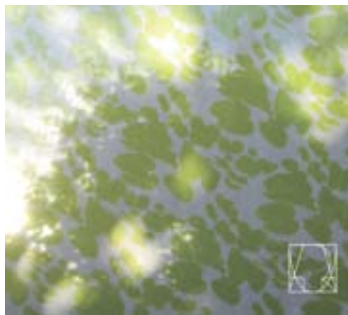
Nina Bretnall

Order in Nature

A range of digitally and screen printed furnishing textiles based on the proven theory of Biophilia (coined by Edward O. Wilson in 1986); The idea that humans, having an innate relationship with nature, benefit psychologically from a natural view.

The term healing garden is an extension of this theory where a garden with a number of criteria are built to be viewed or interacted with by hospital patients and staff.

These textile designs use natural elements of shadow/light, movement and growth to stimulate the visual senses. They provide contrast to their surroundings and form a visual escape, two of the main criteria of a healing garden. Through this the order of nature provides a calming effect while the unexpected invigorates and reconnects us.



B.Des COFA UNSW
nina@septemberdesign.com.au
0422 625 707

Web Development for new srdchange.org site

Kristina Mah
Loan Myers

Each year we are fortunate to have a strong team of volunteer designers to assist with SRD Change. As a result we are in a continuing process of compiling an impressive online and printed archive of all our exhibitions.

Our dedicated web team for the third year running are from the University of Sydney.

Kristina Mah studies Design Computing focussing on mobile technologies and re-defining interpersonal interaction in public space. She has been able to bring some of her ideas to fruition through our site to encourage interaction and navigation.

Loan Myers comes from a graphics background and is also studying Design Computing. His experience in graphics and knowledge of interactive technologies have been applied throughout the site development.

The internet is an excellent technology for exchanging ideas and exploring and advocating responsible design. In addition to the website, we are also utilising social networking tools including twitter and facebook.



B. Design Computing USYD
kmah5957@uni.sydney.edu.au
lmye4695@usyd.edu.au

“
Give a person a fish and you feed them for a day; teach that person to use the Internet and they won't bother you for weeks - anon”

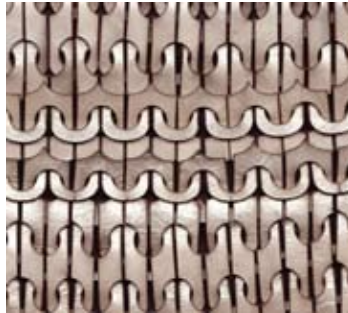
Stephanie Lade

Winter in Sicily

Sustainable Fashion and Textiles

This project explores methods to combat the issue of excessive waste in fashion manufacture.

Influenced by the nature of knitting, only using the amount of material required to produce a garment, the resultant designs were formed by cutting into materials such as leather and canvas and weaving or knitting the shapes together to engineer the garment and pattern shape rather than cut it out of the fabric. The result is no waste. Through also exploring connecting pattern pieces of a garment, minimising any gaps and thus reducing waste, the design influenced the pattern making rather than the reverse.



B. Des Fashion & Textiles (Hons)
B Arts (Int Stud) UTS
stephanie.lade@gmail.com

“
I design by locating a problem, researching it, then creating designs as responses to these defined problems. Sustainability has always been an interest of mine, and I feel that it is something that can easily be incorporated in any small or big way. It can help create new directions in designs, as well as saving our world's diminishing resources.”

Vanguard boutique store embracing sustainable cool...

A branded retail concept environment that aims to reposition the practice of cool out of its embeddedness in ideals of mass-consumerism and into a world of sustainable cool material culture. Cool has been identified as a practice of consumer consumption marked by material and social waste. VANGUARD is a socially and environmentally responsible brand focused on behavioural change through engagement with sustainability that brings meaning to the practice of cool consumerism. VANGUARD isn't just about stunning eco smart fashion, it's smart ideas incorporated into all business practices, it's what you do with what you have in order to leave behind a smaller footprint. Elements within the space are designed as a statement of sustainability, particularly the effect of discarding items that are no longer cool, or items that have a limited lifecycle.



Millie Lakos
B. Des. Int. Des. UTS
millie.lakos@gmail.com
0401 977 221

Fluxus - concept for a healthy, sustainable workplace

Research into 'Healthy Workplaces' and the effect in which working environments can have on an employee's personal health, happiness, performance, productivity, job satisfaction, absenteeism and presenteeism rates, suggests the need for adoption of more considered design practices.

The interior design of the new office for Fluxus was based on healthy psychosocial & physical environments & workplace practices. Multiple concepts facilitated workspaces that create positive dynamics, encourage communication & interaction, promote a positive organisational culture & a greener working environment. The result incorporates -

- adopting practices which highlight the importance of a holistic approach to sustainable environments
- user control over lighting & ventilation
- incorporating practices that offer greater flexibility eg. motion sensitive lighting control systems
- utilising the existing concrete slab to promote thermal mass
- planting around voids to improve indoor environment quality
- use of water efficient fixtures and fittings
- reuse & recycle existing materials
- specification of materials with low VOC's
- FF&E selected based on suppliers that focus on sustainability
- encouraging staff to use alternate modes of transport for commuting to work by providing facilities such as bike parking & showers
- maximising efficient layouts for current & future needs for staff in order to facilitate a positive working environment.



Emma Smogurzewski
B. Design Int. Des. UTS
emma@smogpart.com
0416 272 527

Design Management support team

An event like this requires multiple sources of creative thinking, constructive feedback, research and coordination. We've been fortunate to work with a group with genuine enthusiasm for the task.

“SRD Change 09 gave us the opportunity to use skills developed from studying design management to assist with forming a 10 week strategic plan for organising the SRD Change 09 event from exhibition and spatial design to logistics planning.

During the process, we have gained valuable knowledge about what the organisation is and does and how it is developing awareness of sustainability by questioning paradigms and stimulating solutions through innovative design. SRD is established as a supportive hub for young designers from various backgrounds via their project workshops and SRD Change programs. They provide the opportunity for exposure of these talented emerging designers' work to industry and the public.”

MDes COFA UNSW : I to r

Doris Zhang, Lucy Liu, Rebecca Lo, Anna Tang



“

Working on Change09 has given us an insight into complex event design

”

Gaawaa Miyay

Country on cloth

Lucy Simpson

Lucy Simpson began learning the Gamilaraay and Yuwaalaraay languages of her family in 2007, a process of image association that planted a seed, later to become Gaawaa Miyay (River Daughter) Designs.

The project draws strong inspiration from Simpson's family and the Yuwaalaraay landscape - freshwater country in the northwest of NSW.

The range of four prints represents elements of nature and identity, and implements an eco friendly approach to the textiles printing process (using only water-based inks and all natural fibres).

As part of the development of Gaawaa Miyay, the designer is currently workshopping traditional dyeing sources and techniques with Indigenous fibre artists from around the country to implement into her practice.



B.Des COFA UNSW
gaawaamiyay@gmail.com

“

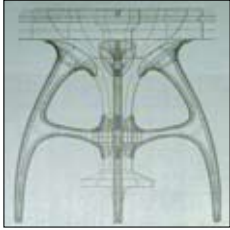
As a young Indigenous practitioner, this debut collection not only represents an expression of contemporary Indigenous culture, but also it continues to give life to the Indigenous tradition of image-base storytelling

- Leanne Amodo, Monument magazine

”

Tom Williams-Moore
Tegan Waldren

Concrete Panel Anchor enables pre-cast wall disassembly



“In the tradition of Japanese joinery and Ando’s formwork art, we designed an ‘appearance grade’ alternative to a component that is currently used once and then permanently concealed.”

The component is an anchor used to crane pre-cast and tilt-up concrete wall panels into place. Permanently exposing the anchors, allows buildings to be disassembled and reassembled numerous times. This simple evolution greatly extends the life cycle of a high embodied energy material.

M.Arch USYD Tom twil5865@usyd.edu.au 0409 032 815

M.Arch USYD Tegan twal9967@uni.sydney.edu.au



gold sponsor and venue provider

Investa Property Group

‘Investa is delighted to be associated with the SRD Change exhibition because we share SRD’s commitment to good design that reduces environmental impacts and improves social outcomes. We are keen to support the next generation of designers who are showing their passion and talent for sustainable design.’ Craig Roussac, General Manager, Sustainability, Safety and Environment, Investa Property Group



Deutsche Bank Place

Investa Property Group is one of the largest unlisted owners of commercial real estate in Australia and enjoys an international reputation in sustainability. In order to continue to innovate for sustainability, Investa Property Group has recently established the Investa Sustainability Institute to conduct action research for sustainability in the built environment. The Institute aims to be a collaborative venture between Investa and research, academic, industry, professional bodies and government organisations. It will be Australian-based and collaborate internationally.

Please see isi.org.au for details.

SRD

The Society for Responsible Design

is an incorporated, not-for-profit, volunteer-based, registered environmental organisation that has explored the relationship between design, the environment & social responsibility since 1989.

A major SRD objective is to support and promote collaboration between educators of all design streams, designers using responsible design practices, manufacturers and the public to advance information, research and education for significantly better built and living environments, products, services and resource management. Through the Change exhibition 2009, SRD celebrates 20 years of promoting positive change, seeing the imperative and opportunity to provide ideas and solutions to advance this important discussion locally and worldwide.

Our SRD bookmark suggests to go beyond 'Reduce; Reuse; Recycle' by adding 'Responsibly Redesign'. It is possible to 'create a future that is nontoxic to all life'. How to "nurture nature" via organic and nontoxic to carbon neutral and radical resource efficiency is quite well known; as is the fact that there's no one product, process, country or energy source that will make our future sustainable. Considered combinations and collaborations through efforts in research, re-evaluation of current process and redesign from single products to whole systems are likely to reap the greatest rewards to secure our future. We now have the challenge to do this on a significant scale to make a tangible difference. SRD Change promotes the exchange of ideas, intelligent experimentation and gives encouragement to create the next level of more sustainable design by building on past developments and incorporating future technologies. Preparation for this event began over a year ago. For SRD Change 10, it's already begun via a graduate project workshop and development of a major new prize to launch the career of a talented young designer.

SRD activities are largely funded by membership subscription which is open to all with a genuine interest in responsible design. Members include businesses, design practices, individual designers, design students, educators and environmentally aware members of the public. Internationally SRD is part of the O2 Global Network and also promotes and participates in global eco design related events such as Teach-In 2012 and the Big Room dotEco pitch. Australian events include Live Futures, FuturesWest 2031 and COS Live Green House. SRD membership details and benefits are online. Your input to assist us to create our sustainable future by design is welcome. www.srd.org.au



SOCIETY FOR
RESPONSIBLE
DESIGN



Greg Campbell_SRD Convenor
srd@green.net.au
0417 289 601



SRD acknowledges the much appreciated contributions made by many more than those listed below in creating our exhibition. LOGO & GRAPHICS Jason Lam, Scott Champion EXHIBITION Xanthe Warren, Mathew Mariani, Joseph O'Meara; Exhibition pieces from SRD M.A.D.E. accountable 1995; Exhibition plinths by Natacha Brochard from COFA SPONSORSHIP Justine Smith HOSPITALITY Nina Bretnall CATALOGUE Johanna Worton WEB Loan Myers, Kristina Mah INKIND Business support: Colquhouns. Chartered Accountants, Heineken Lion; UTS for use of their meeting space in Ultimo; Design and Architecture Lecturers and departments across Sydney Universities PROJECT PLANNING /SUPPORT: Cheryl Campbell, the full SRD Executive PROJECT manager/curator: Greg Campbell_DesignOz



Environmental Credentials: PRINT fishprint: Computer-To-Plate + Waterless printing + low VOC Vege Inks process PAPER Focus Quality Paper: 105gsm RePrint 100% Recycled offset: 90% Post Consumer Fibre + 10% Pre see REAP guide www.srd.org.au/reap.htm + greener print guide www.srd.org.au/gppg.htm

Publisher: Society for Responsible Design Copyright October 2009 Designers: SRD Change 09 team Director: Greg Campbell Editor: Selena Griffith ISBN 978-0-9805464-3-9